

INDICE GENERALE

PUNTE

DRILL

ST-QP 3XD



pag 168

ST-HP



pag 170

ATTACCHI STKE HP



pag 174

INSERTI TIPO KOMET



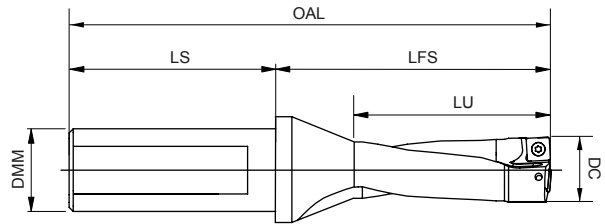
pag 169

PUNTE ST Q

ST Q DRILL

Punte di foratura a fissaggio meccanico con inserto quadro. Altissime prestazioni su tutti i materiali.

Indexable insert drill with square inserts. High performance for all materials.



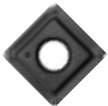
*Punte 3 X D/*Drill 3xD

DC	LU	CODICE	OAL	LFS	LS	DMM					
14.0	42	ST QP 14.00 3D 20 SC05	116	66	50	20	ST VI.FB 2.0X4.3	T06-P	0,5	✓	SCLX 05.. ●
15.0	45	ST QP 15.00 3D 20 SC05	119	69	50	20	ST VI.FB 2.0X4.3	T06-P	0,5	✓	SCLX 05.. ●
15.5	48	ST QP 15.50 3D 20 SC05	122	72	50	20	ST VI.FB 2.0X4.3	T06-P	0,5	✓	SCLX 05.. ●
16.0	48	ST QP 16.00 3D 20 SC05	122	72	50	20	ST VI.FB 2.0X4.3	T06-P	0,5	✓	SCLX 05.. ●
16.5	48	ST QP 16.50 3D 20 SC05	122	72	50	20	ST VI.FB 2.0X4.3	T06-P	0,5	✓	SCLX 05.. ●
17.0	51	ST QP 17.00 3D 20 SC06	125	75	50	20	ST VI.FB 2.2X5.5	T06-P	0,5	✓	SCLX 06.. ●
17.5	54	ST QP 17.50 3D 25 SC06	134	78	56	25	ST VI.FB 2.2X5.5	T06-P	0,5	✓	SCLX 06.. ●
18.0	54	ST QP 18.00 3D 25 SC06	134	78	56	25	ST VI.FB 2.2X5.5	T06-P	0,5	✓	SCLX 06.. ●
18.5	57	ST QP 18.50 3D 25 SC06	137	81	56	25	ST VI.FB 2.2X5.5	T06-P	0,5	✓	SCLX 06.. ●
19.0	57	ST QP 19.00 3D 25 SC06	137	81	56	25	ST VI.FB 2.2X5.5	T06-P	0,5	✓	SCLX 06.. ●
19.5	60	ST QP 19.50 3D 25 SC06	140	84	56	25	ST VI.FB 2.2X5.5	T06-P	0,5	✓	SCLX 06.. ●
20.0	60	ST QP 20.00 3D 25 SC07	140	84	56	25	ST VI.FB 2.5X6.3	T08-P	1,2	✓	SCLX 07.. ●
21.0	63	ST QP 21.00 3D 25 SC07	143	87	56	25	ST VI.FB 2.5X6.3	T08-P	1,2	✓	SCLX 07.. ●
22.0	66	ST QP 22.00 3D 25 SC07	146	90	56	25	ST VI.FB 2.5X6.3	T08-P	1,2	✓	SCLX 07.. ●
22.5	66	ST QP 22.50 3D 25 SC07	149	93	56	25	ST VI.FB 2.5X6.3	T08-P	1,2	✓	SCLX 07.. ●
23.0	69	ST QP 23.00 3D 25 SC07	149	93	56	25	ST VI.FB 2.5X6.3	T08-P	1,2	✓	SCLX 07.. ●
24.0	72	ST QP 24.00 3D 32 SC08	156	96	60	32	ST VI.FB 3.0X7.0	T08-P	1,2	✓	SCLX 08.. ●
25.0	75	ST QP 25.00 3D 32 SC08	159	99	60	32	ST VI.FB 3.0X7.0	T08-P	1,2	✓	SCLX 08.. ●
26.0	78	ST QP 26.00 3D 32 SC08	162	102	60	32	ST VI.FB 3.0X7.0	T08-P	1,2	✓	SCLX 08.. ●
26.5	81	ST QP 26.50 3D 32 SC08	165	105	60	32	ST VI.FB 3.0X7.0	T08-P	1,2	✓	SCLX 08.. ●
27.0	81	ST QP 27.00 3D 32 SC08	165	105	60	32	ST VI.FB 3.0X7.0	T08-P	1,2	✓	SCLX 08.. ●
28.0	84	ST QP 28.00 3D 32 SC08	168	108	60	32	ST VI.FB 3.0X7.0	T08-P	1,2	✓	SCLX 08.. ●
29.0	87	ST QP 29.00 3D 32 SC10	171	111	60	32	ST VI.FB 3.5X7.5	T15-P	3,0	✓	SCLX 10.. ●
30.0	90	ST QP 30.00 3D 32 SC10	179	119	60	32	ST VI.FB 3.5X7.5	T15-P	3,0	✓	SCLX 10.. ●
31.0	93	ST QP 31.00 3D 32 SC10	182	122	60	32	ST VI.FB 3.5X7.5	T15-P	3,0	✓	SCLX 10.. ●
32.0	96	ST QP 32.00 3D 32 SC10	185	125	60	32	ST VI.FB 3.5X7.5	T15-P	3,0	✓	SCLX 10.. ●
33.0	99	ST QP 33.00 3D 32 SC10	188	128	60	32	ST VI.FB 3.5X7.5	T15-P	3,0	✓	SCLX 10.. ●
34.0	102	ST QP 34.00 3D 32 SC10	191	131	60	32	ST VI.FB 3.5X7.5	T15-P	3,0	✓	SCLX 10.. ●
35.0	105	ST QP 35.00 3D 32 SC10	194	134	60	32	ST VI.FB 3.5X7.5	T15-P	3,0	✓	SCLX 10.. ●
36.0	108	ST QP 36.00 3D 32 SC12	197	137	60	32	ST VI.FB 4.5X10	T20-P	5,0	✓	SCLX 12.. ●
37.0	111	ST QP 37.00 3D 32 SC12	210	150	60	32	ST VI.FB 4.5X10	T20-P	5,0	✓	SCLX 12.. ●
38.0	114	ST QP 38.00 3D 32 SC12	213	153	60	32	ST VI.FB 4.5X10	T20-P	5,0	✓	SCLX 12.. ●
39.0	117	ST QP 39.00 3D 32 SC12	216	156	60	32	ST VI.FB 4.5X10	T20-P	5,0	✓	SCLX 12.. ●
40.0	120	ST QP 40.00 3D 32 SC12	219	159	60	32	ST VI.FB 4.5X10	T20-P	5,0	✓	SCLX 12.. ●
41.0	123	ST QP 41.00 3D 32 SC12	222	162	60	32	ST VI.FB 4.5X10	T20-P	5,0	✓	SCLX 12.. ●
42.0	126	ST QP 42.00 3D 32 SC12	225	165	60	32	ST VI.FB 4.5X10	T20-P	5,0	✓	SCLX 12.. ●
43.0	129	ST QP 43.00 3D 32 SC12	228	168	60	32	ST VI.FB 4.5X10	T20-P	5,0	✓	SCLX 12.. ●
44.0	132	ST QP 44.00 3D 32 SC12	231	171	60	32	ST VI.FB 4.5X10	T20-P	5,0	✓	SCLX 12.. ●

● Stock Italia/Warehouse in Italy

○ Stock Estero/Warehouse abroad

Inserti per punte ST Q/ST Q Drill Inserts

CODICE/CODE				
D. 14 - 16,5	SCLX050204 PMK25P	P M K	Inserto per punte ST Q e frese ST45 SQ	●
	SCLX050204 PM40P	P M	Inserto per punte ST Q e frese ST45 SQ	●
	SCLX050204 MS30P	M S	Inserto per punte ST Q e frese ST45 SQ	●
D. 17 - 19,5	SCLX060206 PMK25P	P M K	Inserto per punte ST Q e frese ST45 SQ	●
	SCLX060206 PM40P	P M	Inserto per punte ST Q e frese ST45 SQ	●
	SCLX060206 MS30P	M S	Inserto per punte ST Q e frese ST45 SQ	●
D. 20 - 23	SCLX070308 PMK25P	P M K	Inserto per punte ST Q e frese ST45 SQ	●
	SCLX070308 PM40P	P M	Inserto per punte ST Q e frese ST45 SQ	●
	SCLX070308 MS30P	M S	Inserto per punte ST Q e frese ST45 SQ	●
D. 23,5 - 28	SCLX080408 PMK25P	P M K	Inserto per punte ST Q e frese ST45 SQ	●
	SCLX080408 PM40P	P M	Inserto per punte ST Q e frese ST45 SQ	●
	SCLX080408 MS30P	M S	Inserto per punte ST Q e frese ST45 SQ	●
D. 29 - 35	SCLX100408 PMK25P	P M K	Inserto per punte ST Q e frese ST45 SQ	●
	SCLX100408 PM40P	P M	Inserto per punte ST Q e frese ST45 SQ	●
	SCLX100408 MS30P	M S	Inserto per punte ST Q e frese ST45 SQ	●
D. 36 - 44	SCLX120508 PMK25P	P M K	Inserto per punte ST Q e frese ST45 SQ	●
	SCLX120508 PM40P	P M	Inserto per punte ST Q e frese ST45 SQ	●
	SCLX120508 MS30P	M S	Inserto per punte ST Q e frese ST45 SQ	●
	SOEX 050204-01 BO MS45P	M S	Inserto per punte Komet	●
	SOEX 050204-01 BO PM30P	P M	Inserto per punte Komet	●
	SOEX 060306-01 BO MS45P	M S	Inserto per punte Komet	●
	SOEX 060306-01 BO PM30P	P M	Inserto per punte Komet	●
	SOEX 07T308-01 BO MS45P	M S	Inserto per punte Komet	●
	SOEX 07T308-01 BO PM30P	P M	Inserto per punte Komet	●
	SOEX 07T308-01 BO PMK35C	P M K	Inserto per punte Komet	●
	SOEX 090408-01 BO MS45P	M S	Inserto per punte Komet	●
	SOEX 090408-01 BO PM30P	P M	Inserto per punte Komet	●
	SOEX 090408-01 BO PMK35C	P M K	Inserto per punte Komet	●
	SOEX 120508-01 BO MS45P	M S	Inserto per punte Komet	●
	SOEX 120508-01 BO PM30P	P M	Inserto per punte Komet	●
SOEX 120508-01 BO PMK35C	P M K	Inserto per punte Komet	●	

● Stock Italia/Warehouse in Italy

○ Stock Estero/Warehouse abroad

A richiesta/On request

INFORMAZIONI TECNICHE/TECHNICAL INFORMATION
GRADI/GRADES

PMK 25P	Universale prima scelta per acciai inox e ghise per elevate velocità di taglio. Riv. PVD <i>Universal first choice for SS and cast iron for high cutting speed. PVD coating.</i>
MS 30P	Micrograno per inox superleghe e acciai con ottima resistenza all'usura. Riv. PVD <i>Micrograin for SS and super alloys and steel with high wear resistance. PVD coating.</i>
PM 40P	Tenace per acciai, inox, superleghe e acciai da stampi con medie e basse velocità di taglio. Riv. PVD. <i>Tough grade for SS super alloys, steel and dies-steel for medium-low cutting speed. PVD coating.</i>
BO PM30P	Universale prima scelta per acciai, inox, ghise con elevate velocità di taglio. <i>Universal first choice for steel, stainless steel, cast iron with high cutting speeds.</i>
BO PMK35C	Lavorazione per alte velocità di taglio per tutti i materiali. Resistente. <i>Processing for high cutting speeds for all materials. Resistant.</i>
BO MS45P	Tenace per inox, superleghe e acciai a basse e medie velocità di taglio. <i>Tenacious for stainless steel, super alloys and steels at low and medium cutting speeds.</i>

PARAMETRI DI TAGLIO/CUTTING PARAMETERS
Velocità di taglio in metri/minuto / Cutting speed in metres/minute

MATERIALE MATERIAL	PMK 25P	MS 30P	PM 40P
Acciaio dolce/Mild steel	200- 260 -320	180- 220 -280	170- 200 -250
Acciaio basso medio legato/Low medium alloy steel	180- 200 -230	160- 180 -210	140- 170 -190
Acciaio legato stampi-utensili/Alloy steel dies-tools	160- 180 -210	130- 150 -180	110- 130 -150
Inox/ss	130- 150 -180	120- 140 -170	100- 120 -150
Duplex, leghe titanio, inconel 625/Duplex steel, titanium alloys, Inconel 625	65- 80 -85	60- 80 -100	50- 70 -90
Ghisa/Cast iron	130- 180 -220	-	-

Avanzamenti in mm./giro / Feed rate in mm/360°

MATERIALE MATERIAL	DIAMETRI PUNTE/DIAMETERS BITS					
	14-16	16,5 - 19,5	20 - 23	23,5 - 28	29 - 35	36 - 44
Acciaio dolce/Mild steel	0,04- 0,05 -0,06	0,05- 0,07 -0,09	0,06- 0,08 -0,12	0,07- 0,09 -0,12	0,08- 0,11 -0,13	0,09- 0,12 -0,16
Acciaio basso medio legato Low medium alloy steel	0,05- 0,06 -0,07	0,06- 0,09 -0,12	0,08- 0,11 -0,16	0,09- 0,12 -0,16	0,10- 0,14 -0,15	0,12- 0,15 -0,19
Acciaio legato stampi-utensili Alloy steel dies-tools.	0,04- 0,05 -0,07	0,05- 0,08 -0,11	0,07- 0,10 -0,13	0,09- 0,11 -0,14	0,09- 0,12 -0,15	0,11- 0,14 -0,17
Inox/ss	0,04- 0,05 -0,06	0,04- 0,06 -0,07	0,05- 0,07 -0,09	0,07- 0,09 -0,11	0,08- 0,11 -0,13	0,08- 0,12 -0,16
Duplex, leghe titanio, inconel 625 Duplex steel, titanium alloys, Inconel 625	0,04- 0,05 -0,06	0,04- 0,05 -0,06	0,05- 0,08 -0,11	0,07- 0,08 -0,11	0,07- 0,09 -0,11	0,07- 0,10 -0,13
Ghisa/Cast iron	0,06- 0,08 -0,10	0,06- 0,09 -0,12	0,08- 0,11 -0,14	0,10- 0,13 -0,16	0,12- 0,15 -0,18	0,15- 0,18 -0,21

ST-HP



PUNTE ST HP

ST HP DRILL

Punte per foratura regolabili con pilota di guida e cartucce. Pattini guida inclusi nella fornitura.

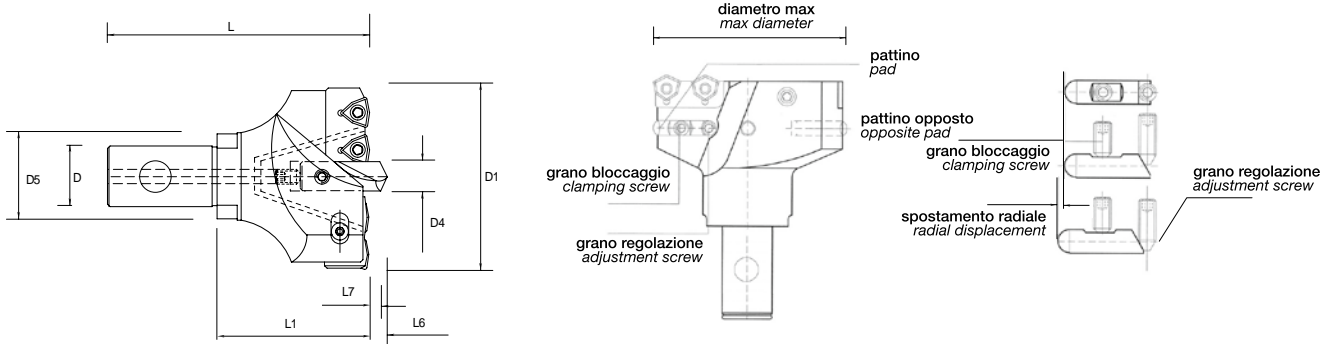
Adjustable drills with guide pilot and cartridges. Guide pads included in the supply.



CORPO PUNTA	D1		D4	L1	L	D5	D	PUNTA PILOTA	VITE BLOCCAGGIO PUNTA PILOTA	VITE REGOLAZIONE PUNTA PILOTA	
	MAX	MIN									
STHP 50-5	50	45	8	50	85	28	13	B510S 08..	ST VB.HQ 6.0X10	ST VR.HQ 5.0X16	○
STHP 55-5	50	55	8	50	85	28	13	B510S 08..	ST VB.HQ 6.0X10	ST VR.HQ 5.0X16	○
STHP 58-3	58	55	8	60	100	32	16	B510S 08..	ST VB.HQ 6.0X10	ST VR.HQ 6.0X16	○
STHP 63-5	63	58	10	60	100	32	16	B510S 10..	ST VB.HQ 8.0X10	ST VR.HQ 6.0X16	○
STHP 68-5-16	68	63	10	60	100	32	16	B510S 10..	ST VB.HQ 8.0X10	ST VR.HQ 6.0X16	○
STHP 68-5-22	68	63	10	70	115	40	22	B510S 10..	ST VB.HQ 8.0X10	ST VR.HQ 8.0X20	○
STHP 73-5	73	68	10	70	115	40	22	B510S 10..	ST VB.HQ 8.0X10	ST VR.HQ 8.0X20	○
STHP 78-5	78	73	15	70	115	40	22	B510S 15..	ST VB.HQ 10X12	ST VR.HQ 8.0X20	○
STHP 84-6-22	84	78	15	70	115	40	22	B510S 15..	ST VB.HQ 10X12	ST VR.HQ 8.0X20	○
STHP 84-6-27	84	78	15	70	120	48	27	B510S 15..	ST VB.HQ 10X12	ST VR.HQ 10X20	○
STHP 90-6	90	84	15	70	120	48	27	B510S 15..	ST VB.HQ 10X12	ST VR.HQ 10X20	○
STHP 96-6	96	90	15	70	120	48	27	B510S 15..	ST VB.HQ 10X12	ST VR.HQ 10X20	○
STHP 102-6-27	102	96	20	70	120	48	27	B510S 20..	ST VB.HQ 12X16	ST VR.HQ 10X20	○
STHP 102-6-32	102	96	20	80	130	58	32	B510S 20..	ST VB.HQ 12X16	ST VR.HQ 10X20	○
STHP 108-6	108	102	20	80	130	58	32	B510S 20..	ST VB.HQ 12X16	ST VR.HQ 12X22	○
STHP 115-7	115	108	20	80	130	58	32	B510S 20..	ST VB.HQ 12X16	ST VR.HQ 12X22	○
STHP 122-7	122	115	20	90	145	70	40	B510S 20..	ST VB.HQ 12X16	ST VR.HQ 12X22	○
STHP 130-8	130	122	25	90	145	70	40	B510S 25..	ST VB.HQ 14X16	ST VR.HQ 12X22	○
STHP 140-10	140	130	25	90	145	70	40	B510S 25..	ST VB.HQ 14X16	ST VR.HQ 12X22	○
STHP 150-10	150	140	25	100	160	80	50	B510S 25..	ST VB.HQ 14X16	ST VR.HQ 16X25	○
STHP 158-8	158	150	25	100	160	80	50	B510S 25..	ST VB.HQ 14X16	ST VR.HQ 16X25	○
STHP 162-4	162	158	25	100	160	80	50	B510S 25..	ST VB.HQ 14X16	ST VR.HQ 16X25	○
STHP 180	180	30	120	180	90	50	50	B510S 30..	ST VB.HQ 16X16	ST VR.HQ 16X25	○
STHP 190	190	30	120	180	90	50	50	B510S 30..	ST VB.HQ 16X16	ST VR.HQ 16X25	○
STHP 200	200	30	130	190	90	50	50	B510S 30..	ST VB.HQ 16X16	ST VR.HQ 16X25	○

● Stock Italia/Warehouse in Italy

○ Stock Estero/Warehouse abroad



D1 MAX	CARTUCCE INTERNE	VITE CARTUCCE	CARTUCCE ESTERNE	VITE CARTUCCE	RONDELLA CARTUCCE
50	STHC 50 I50 D03 STHC 50 I50 W18	ST VC.ZJ 4.0X10	STHC 50 E51 D03 STHC 50 E51 W18	ST VC.ZJ 4.0X10	ST R.ZJ 4.3X7.0X0.5 ○
55	STHC 55 I52 D03 STHC 55 I52 W18	ST VC.ZJ 4.0X10	STHC 55 E53 D03 STHC 55 E53 W18	ST VC.ZJ 4.0X10	ST R.ZJ 4.3X7.0X0.5 ○
58	STHC 58 I38 D05 STHC 58 I38 W24	ST VC.ZJ 5.0X12	STHC 58 E39 D05 STHC 58 E39 W24	ST VC.ZJ 5.0X12	ST R.ZJ 5.5X9.0X0.5 ○
63	STHC 63 I23 D05 STHC 63 I23 W24	ST VC.ZJ 5.0X12	STHC 6368 E24 D05 STHC 6368 E24 W24	ST VC.ZJ 5.0X12	ST R.ZJ 5.5X9.0X0.5 ○
68	STHC 68 I25 D05 STHC 68 I25 W24	ST VC.ZJ 5.0X12	STHC 6368 E24 D05 STHC 6368 E24 W24	ST VC.ZJ 5.0X12	ST R.ZJ 5.5X9.0X0.5 ○
68	STHC 68 I25 D05 STHC 68 I25 W24	ST VC.ZJ 5.0X12	STHC 6368 E24 D05 STHC 6368 E24 W24	ST VC.ZJ 5.0X12	ST R.ZJ 5.5X9.0X0.5 ○
73	STHC 7378 I26 D05 STHC 7378 I26 W24	ST VC.ZJ 5.0X12	STHC 7378 E27 D05 STHC 7378 E27 W24	ST VC.ZJ 5.0X12	ST R.ZJ 5.5X9.0X0.5 ○
78	STHC 7378 I26 D05 STHC 7378 I26 W24	ST VC.ZJ 5.0X12	STHC 7378 E27 D05 STHC 7378 E27 W24	ST VC.ZJ 5.0X12	ST R.ZJ 5.5X9.0X0.5 ○
84	STHC 8490 I28 D06 STHC 8490 I28 W34	ST VC.ZJ 6.0X12	STHC 8490 E29 D06 STHC 8490 E29 W34	ST VC.ZJ 6.0X12	ST R.ZJ 6.5X10.5X2.0 ○
84	STHC 8490 I28 D06 STHC 8490 I28 W34	ST VC.ZJ 6.0X12	STHC 8490 E29 D06 STHC 8490 E29 W34	ST VC.ZJ 6.0X12	ST R.ZJ 6.5X10.5X2.0 ○
90	STHC 8490 I28 D06 STHC 8490 I28 W34	ST VC.ZJ 6.0X12	STHC 8490 E29 D06 STHC 8490 E29 W34	ST VC.ZJ 6.0X12	ST R.ZJ 6.5X10.5X2.0 ○
96	STHC 96102 I30 D06 STHC 96102 I30 W34	ST VC.ZJ 6.0X16	STHC 96102 E31 D06 STHC 96102 E31 W34	ST VC.ZJ 6.0X12	ST R.ZJ 6.5X10.5X2.0 ○
102	STHC 96102 I30 D06 STHC 96102 I30 W34	ST VC.ZJ 6.0X16	STHC 96102 E31 D06 STHC 96102 E31 W34	ST VC.ZJ 6.0X12	ST R.ZJ 6.5X10.5X2.0 ○
102	STHC 96102 I30 D06 STHC 96102 I30 W34	ST VC.ZJ 6.0X16	STHC 96102 E31 D06 STHC 96102 E31 W34	ST VC.ZJ 6.0X12	ST R.ZJ 6.5X10.5X2.0 ○
108	STHC 108 I81 D05 STHC 108 I81 W24	ST VC.ZJ 8.0X20	STHC 108 E82 D05 STHC 108 E82 W24	ST VC.ZJ 8.0X20	ST R.ZJ 8.3X13.5X2.5 ○
115	STHC 115 I83 D06 STHC 115 I83 W34	ST VC.ZJ 8.0X20	STHC 115 E84 D06 STHC 115 E84 W34	ST VC.ZJ 8.0X20	ST R.ZJ 8.3X13.5X2.5 ○
122	STHC 122 I85 D06 STHC 122 I85 W34	ST VC.ZJ 8.0X25	STHC 122 E86 D06 STHC 122 E86 W34	ST VC.ZJ 8.0X20	ST R.ZJ 8.3X13.5X2.5 ○
130	STHC 130 I79 D06 STHC 130 I79 W34	ST VC.ZJ 8.0X20	STHC 130 E80 D06 STHC 130 E80 W34	ST VC.ZJ 8.0X20	ST R.ZJ 8.3X13.5X2.5 ○
140	STHC 140 I87 D06 STHC 140 I87 W34	ST VC.ZJ 8.0X20	STHC 140 E88 D06 STHC 140 E88 W34	ST VC.ZJ 8.0X20	ST R.ZJ 8.3X13.5X2.5 ○
150	STHC 150 I77 D07 STHC 150 I77 W42	ST VC.ZJ 8.0X25	STHC 150 E78 D07 STHC 150 E78 W42	ST VC.ZJ 8.0X25	ST R.ZJ 8.3X13.5X2.5 ○
158	STHC 158 I75 D07 STHC 158 I75 W42	ST VC.ZJ 8.0X25	STHC 158 E76 D07 STHC 158 E76 W42	ST VC.ZJ 8.0X25	ST R.ZJ 8.3X13.5X2.5 ○
162	STHC 162 I73 D07 STHC 162 I73 W42	ST VC.ZJ 8.0X25	STHC 162 E74 D07 STHC 162 E74 W42	ST VC.ZJ 8.0X25	ST R.ZJ 8.3X13.5X2.5 ○
180	STHC 96102 I30 D06 STHC 96102 I30 W34	ST VC.ZJ 6.0X16	STHC 96102 E31 D06 STHC 96102 E31 W34	ST VC.ZJ 6.0X12	ST R.ZJ 6.5X10.5X2.0 ○
190	STHC 96102 I30 D06 STHC 96102 I30 W34	ST VC.ZJ 6.0X16	STHC 96102 E31 D06 STHC 96102 E31 W34	ST VC.ZJ 6.0X12	ST R.ZJ 6.5X10.5X2.0 ○
200	STHC 108 I81 D05 STHC 108 I81 W24	ST VC.ZJ 8.0X20	STHC 108 E82 D05 STHC 108 E82 W24	ST VC.ZJ 8.0X20	ST R.ZJ 8.3X13.5X2.5 ○

● Stock Italia/Warehouse in Italy

○ Stock Estero/Warehouse abroad

ST-HP

PUNTE ST HP ST HP DRILL



D1 MAX	N° CARTUCCE INT	N° CARTUCCE EST	N° INSERTI CARTUCCE	DIMENSIONI INSERTI	VITE INSERTI	PATTINO GUIDA	VITE BLOCCAGGIO PATTINO	VITE REGOLAZIONE PATTINO	
50	1	1	2	DFT 03.. W29 18..	ST VI.ZJ 2.5X4.0 ST VI.FB 2.2X5.5	ST PG.HQ G06	ST VB.HQ 5.0X8.0	ST VR.HQ 5.0X8.0	○
55	1	1	2	DFT 03.. W29 18..	ST VI.ZJ 2.5X4.0 ST VI.FB 2.2X5.5	ST PG.HQ G06	ST VB.HQ 5.0X8.0	ST VR.HQ 5.0X8.0	○
58	1	1	2	DFT 05.. W29 24..	ST VI.ZJ 3.0X7.2 ST VI.FB 2.5X7.2	ST PG.HQ G06	ST VB.HQ 5.0X8.0	ST VR.HQ 5.0X8.0	○
63	1	1	2	DFT 05.. W29 24..	ST VI.ZJ 3.0X7.2 ST VI.FB 2.5X7.2	ST PG.HQ G06	ST VB.HQ 5.0X8.0	ST VR.HQ 5.0X8.0	○
68	1	1	2	DFT 05.. W29 24..	ST VI.ZJ 3.0X7.2 ST VI.FB 2.5X7.2	ST PG.HQ G06	ST VB.HQ 5.0X8.0	ST VR.HQ 5.0X8.0	○
68	1	1	2	DFT 05.. W29 24..	ST VI.ZJ 3.0X7.2 ST VI.FB 2.5X7.2	ST PG.HQ G06	ST VB.HQ 5.0X8.0	ST VR.HQ 5.0X8.0	○
73	1	1	2	DFT 05.. W29 24..	ST VI.ZJ 3.0X7.2 ST VI.FB 2.5X7.2	ST PG.HQ G08	ST VB.HQ 5.0X8.0	ST VR.HQ 5.0X8.0	○
78	1	1	2	DFT 05.. W29 24..	ST VI.ZJ 3.0X7.2 ST VI.FB 2.5X7.2	ST PG.HQ G08	ST H VRG 6.0X10	ST VR.HQ 6.0X10	○
84	1	1	2	DFT 06.. W29 34..	ST VI.ZJ 3.5X8.7 ST VI.FB 3.5X7.3	ST PG.HQ G08	ST H VRG 6.0X10	ST VR.HQ 6.0X10	○
84	1	1	2	DFT 06.. W29 34..	ST VI.ZJ 3.5X8.7 ST VI.FB 3.5X7.3	ST PG.HQ G08	ST H VRG 6.0X10	ST VR.HQ 6.0X10	○
90	1	1	2	DFT 06.. W29 34..	ST VI.ZJ 3.5X8.7 ST VI.FB 3.5X7.3	ST PG.HQ G08	ST H VRG 6.0X10	ST VR.HQ 6.0X10	○
96	1	1	2	DFT 06.. W29 34..	ST VI.ZJ 3.5X8.7 ST VI.FB 3.5X7.3	ST PG.HQ G08	ST H VRG 6.0X10	ST VR.HQ 6.0X10	○
102	1	1	2	DFT 06.. W29 34..	ST VI.ZJ 3.5X8.7 ST VI.FB 3.5X7.3	ST PG.HQ G10	ST H VRG 6.0X10	ST VR.HQ 6.0X10	○
102	1	1	2	DFT 06.. W29 34..	ST VI.ZJ 3.5X8.7 ST VI.FB 3.5X7.3	ST PG.HQ G10	ST H VRG 6.0X10	ST VR.HQ 6.0X10	○
108	1	1	3	DFT 05.. W29 24..	ST VI.ZJ 3.0X7.2 ST VI.FB 2.5X7.2	ST PG.HQ G10	ST H VRG 6.0X10	ST VR.HQ 6.0X10	○
115	1	1	3	DFT 06.. W29 34..	ST VI.ZJ 3.5X8.7 ST VI.FB 3.5X7.3	ST PG.HQ G10	ST H VRG 8.0X10	ST VR.HQ 8.0X10	○
122	1	1	3	DFT 06.. W29 34..	ST VI.ZJ 3.5X8.7 ST VI.FB 3.5X7.3	ST PG.HQ G10	ST H VRG 8.0X10	ST VR.HQ 8.0X10	○
130	1	1	3	DFT 06.. W29 34..	ST VI.ZJ 3.5X8.7 ST VI.FB 3.5X7.3	ST PG.HQ G10	ST H VRG 8.0X10	ST VR.HQ 8.0X10	○
140	1	1	3	DFT 06.. W29 34..	ST VI.ZJ 3.5X8.7 ST VI.FB 3.5X7.3	ST PG.HQ G12	ST H VRG 8.0X10	ST VR.HQ 8.0X10	○
150	1	1	3	DFT 07.. W29 42..	ST VI.ZJ 3.5X12 ST VI.FB 4.5X9.0	ST PG.HQ G12	ST H VRG 8.0X10	ST VR.HQ 8.0X10	○
158	1	1	3	DFT 07.. W29 42..	ST VI.ZJ 3.5X12 ST VI.FB 4.5X9.0	ST PG.HQ G12	ST H VRG 8.0X10	ST VR.HQ 8.0X10	○
162	1	1	3	DFT 07.. W29 42..	ST VI.ZJ 3.5X12 ST VI.FB 4.5X9.0	ST PG.HQ G12	ST H VRG 8.0X10	ST VR.HQ 8.0X10	○
180	3	1	2	DFT 06.. W29 34..	ST VI.ZJ 3.5X8.7 ST VI.FB 3.5X7.3		SENZA PATTINO		○
190	3	1	2	DFT 06.. W29 34..	ST VI.ZJ 3.5X8.7 ST VI.FB 3.5X7.3		SENZA PATTINO		○
200	3	1	3	DFT 05.. W29 24..	ST VI.ZJ 3.0X7.2 ST VI.FB 2.5X7.2		SENZA PATTINO		○

ISTRUZIONI PUNTE ST HP

Per diametri inferiori al diametro nominale:

- modificare il diametro max della punta riducendo la cartuccia esterna.
- l' accorciamento della cartuccia comporta una riduzione del diametro del doppio della misura tolta.
- la misura massima di riduzione diametrale si rileva dal codice punta.

Es. una STHP 50-5 con cartuccia non ridotta fora D. 50 max e D. 45 min.

In base al rapporto tra la lunghezza e il diametro della punta si deve regolare la sporgenza del pilota agendo sulla vite di regolazione pilota (vedi tabella soprariportata).

L'anello di trascinamento viene fornito assieme all'attacco base o prolunga utilizzati.

I pattini di guida riducono lo sbandamento della punta in uscita.

Regolare i pattini ad un diametro leggermente inferiore al quello dell'inserto esterno agendo sulla vite di regolazione e poi su quella di fissaggio.

Non utilizzare i pattini guida con fori corti, in foratura verticale con trucioli non controllati e con lubrificante insufficiente a far uscire i trucioli dal foro.

La centratura non è necessaria su superfici piane. Solo su lunghezze elevate e in modo particolare in applicazioni orizzontali è il caso di eseguire un centrino di diametro minore di quello della punta pilota e con un angolo di testa leggermente maggiore ai 118°.

Non è possibile forare a pacco.

Per quanto riguarda la scelta degli inserti e i parametri di tagli vedere cataloghi Komet e Kennametal.

INSTRUCTIONS ST HP BITS

For diameters that are lower than the nominal diameter:

- modify the max diameter of the drill by reducing the external cartridge.
- the cartridge shortening implies a reduction of the diameter of twice the removed amount.
- the maximum size of the diameter reduction can be found in the drill code.

E.g.: an STHP 50-5 drill with unreduced cartridge drills D 50 max and D 45 min.

It is necessary to adjust the overhang of the pilot drill depending on the ratio between the length and the diameter of the drill by means of the pilot drill adjustment screw (see the table shown above).

The drive ring is supplied along with the base coupling or extension used.

The guide pads limit the careening of the drill as it comes out.

Adjust the pads to a diameter that is slightly minor to that of the external insert using the adjustment screw and then the fixing screw.

Centering is not necessary on flat surfaces. Exclusively in the case of greater lengths and particularly with horizontal applications it is advisable to make a reference mark with a diameter that is smaller than that of the pilot drill and with a head angle that is slightly above 118°.

Drill packing is not possible.

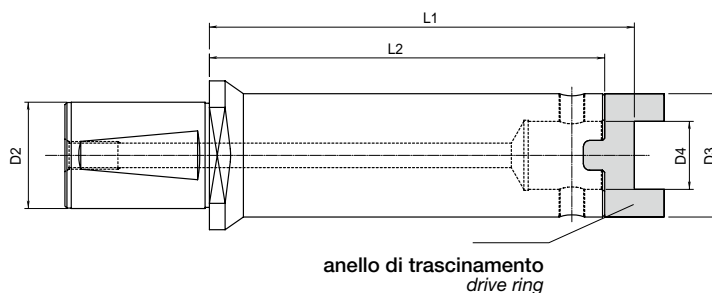
Regarding the choice of inserts and the cutting parameters please see the Komet and Kennametal parameters.

ATTACCHI STKE HP

ATTACCHI STKE HP COUPLINGS STKE HP

Attacchi base e prolunghe per HP Kennametal.

Basic couplings and extensions for Kennametal HP.

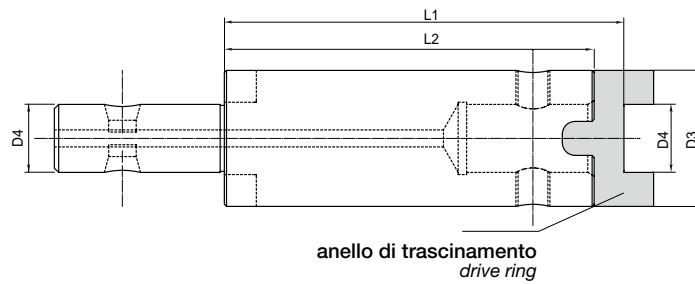


Attacco base per HP/Basic coupling for HP

ATTACCO BASE	D4	D2	D3	L1	L2	ANELLO DI TRASCINAMENTO	VITE DI BLOCCAGGIO	
ST KE AB50 28 13 300	13	50	28	310	300	ST AN.ZJ 28-13	ST VI.ZJ 8.0X1.0	○
ST KE AB50 32 16 200	16	50	32	210	200	ST AN.ZJ 32-16	ST VI.ZJ 8.0X1.0	○
ST KE AB50 32 16 300	16	50	32	310	300	ST AN.ZJ 32-16	ST VI.ZJ 8.0X1.0	○
STKE AB50 40 22 148	22	50	40	160	148	ST AN.ZJ 40-22	ST VI.ZJ 10X1.0	○
STKE AB50 48 27 168	27	50	48	180	168	ST AN.ZJ 48-27	ST VI.ZJ 12X1.0	○
STKE AB50 58 32 186	32	50	58	200	186	ST AN.ZJ 58-32	ST VI.ZJ 12X1.0	○
STKE AB50 58 32 300	32	50	58	314	300	ST AN.ZJ 58-32	ST VI.ZJ 12X1.0	○
STKE AB50 70 40 150	40	50	70	164	150	ST AN.ZJ 70-40	ST VI.ZJ 16X1.5	○
STKE AB50 70 40 300	40	50	70	314	300	ST AN.ZJ 70-40	ST VI.ZJ 16X1.5	○
STKE AB50 80 50 300	50	50	80	316	300	ST AN.ZJ 80-50	ST VI.ZJ 16X1.5	○

● Stock Italia/Warehouse in Italy

○ Stock Estero/Warehouse abroad



Prolunga per HP/Extension for HP

PROLUNGA	D4	D3	L1	L2	ANELLO DI TRASCINAMENTO	VITE DI BLOCCAGGIO	
ST KE PR 28 13 150	13	28	160	150	ST AN.ZJ 28-13	ST VI.ZJ 8.0X1.0	○
ST KE PR 32 16 100	16	32	110	100	ST AN.ZJ 32-16	ST VI.ZJ 8.0X1.0	○
ST KE PR 40 22 200	22	40	212	200	ST AN.ZJ 40-22	ST VI.ZJ 10X1.0	○
ST KE PR 48 27 200	27	48	212	200	ST AN.ZJ 48-27	ST VI.ZJ 12X1.0	○
ST KE PR 58 32 300	32	58	314	300	ST AN.ZJ 58-32	ST VI.ZJ 12X1.0	○
ST KE PR 70 40 300	40	70	314	300	ST AN.ZJ 80-50	ST VI.ZJ 16X1.5	○
ST KE PR 80 50 150	50	80	166	150	ST AN.ZJ 80-50	ST VI.ZJ 16X1.5	○
ST KE PR 80 50 300	50	80	316	300	ST AN.ZJ 80-50	ST VI.ZJ 16X1.5	○

● Stock Italia/Warehouse in Italy

○ Stock Estero/Warehouse abroad